

ARTWORK PREPARATION GUIDE FOR PACKAGING

To help Immij produce your product to the highest possible standard, we kindly ask that you follow the guidelines below as closely as possible when preparing your artwork. If you would like to discuss any of the information provided, please contact us and our team will be happy to assist.

SOFTWARE

Adobe Illustrator:

Artwork supplied in Adobe Illustrator format should be packaged including all linked images and fonts.

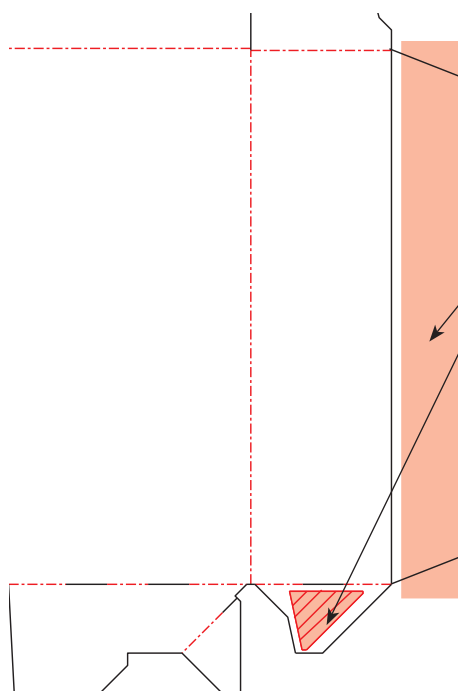
Adobe Indesign:

Artwork supplied in Adobe Indesign format should be packaged including all linked images and fonts.

PDF files:

Artwork supplied in PDF format must use high quality settings with 300dpi image resolution, with 10mm bleed and trim marks.

ARTWORK SETUP



Dieline

When preparing artwork, please use the dieline produced by Immij to manufacture the final product. Please ask your Sales Rep for the dieline before preparing artwork.

Bleed

A minimum of 3mm bleed to be applied outside the dieline.

Glueing/Coating Free

Areas are to kept ink free as defined on the dieline. The dieline shape is to be defined as a spot colour "Dieline". Immij will always supply the dieline as print side up.

Image Area

All text to be 3mm away from cuts and creases.

Images

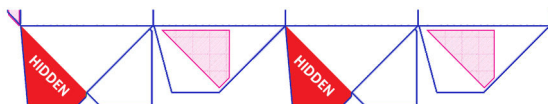
Images need to be a minimum of 300ppi resolution. Please remove any unused spot colours or convert to CMYK.

Minimum Type Size & Line Weights

Positive Art: Minimum 4pt type. Line weight 0.05mm (0.14pt)
Negative Art: Minimum 5pt type. Line weight 0.1mm (0.28pt)

CRASH BOTTOM BOXES

Be aware that these areas in red on a crash bottom box are hidden once the box is made up.



BARCODES

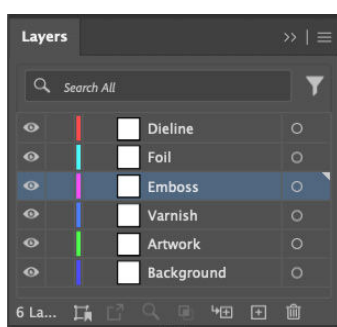
If Immij is to create a barcode, then a space is to be defined and the barcode clearly marked as 'Positional' with type of barcode and size specified.



POSITION ONLY
EAN13 -100%



DOCUMENT LAYER GUIDELINES



When constructing artwork please use layers. To enable us to edit the artwork if required, please avoid flattening layers. See example to the left for layer construction:

- Dieline layer
- Base layer containing background
- Artwork layer for text and logos
- Separate layers for embellishments such as varnish, foil and embossing.